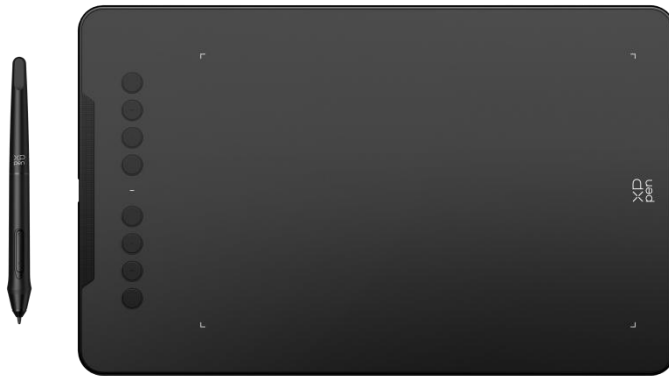


Deco 01/Deco mini7 Drawing Tablet

Contents

1. Introduction	2
1.1 Product Overview	3
1.2 Included with your product	3
2. Connection	4
2.1 Connect to computer	4
2.2 Connect to Android Phone or Tablet	4
3. Compatibility	4
4. Product Settings	5
4.1 Driver Installation	5
4.2 Introduction to Driver	7
4.3 Device Settings	8
4.3.1 Work Area	8
4.3.2 Shortcut Key	11
4.4 Application	13
4.5 Pen Settings	15
4.6 Driver Settings	17
4.7 Driver Uninstallation	17
5. FAQs	18

1. Introduction

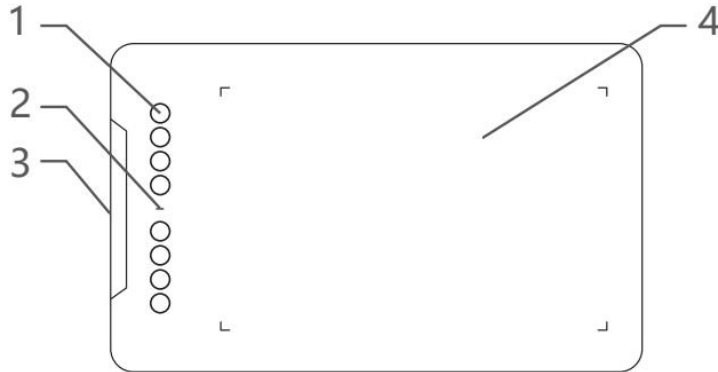


Thank you for choosing XPPen Deco 01/Deco mini7 Drawing Tablet. This user manual is specially designed to detail the product's functions and features. Please read this manual before using the product to ensure safe and proper use.

Due to the latest product improvements, content may differ from the final product and is subject to change without prior notice.

Note: The pictures in the User Manual are for reference only. The User Manual supplied with the device may vary depending on the model.

1.1 Product Overview



- 1、 Shortcut keys
- 2、 Indicator light
 - a. Flashing: the stylus is in range, but not touching the active area.
 - b. Always On: the stylus is in contact with the active area.
 - c. Off: the stylus is beyond the active area.
- 3、 USB-C port
- 4、 Active area

1.2 Included with your product

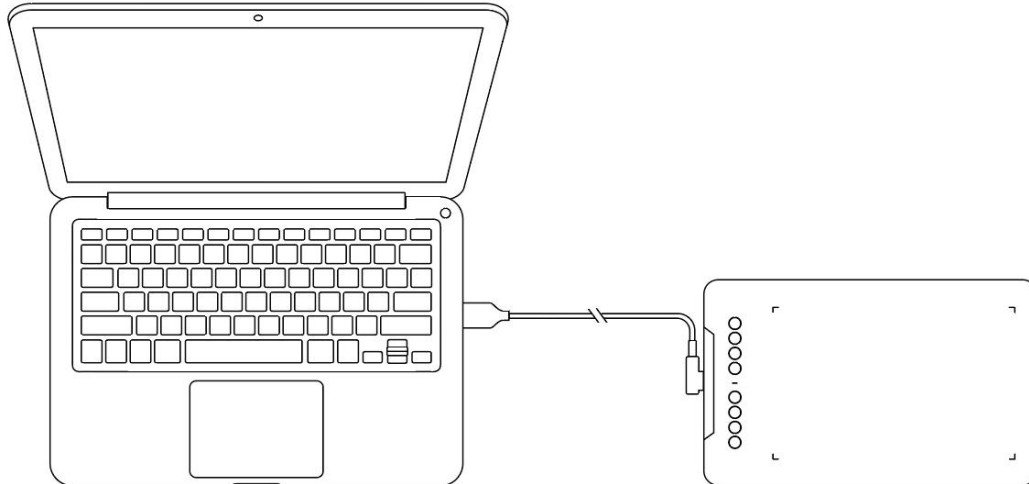
- 1 x Stylus
- 1 x Stylus Stand (Only Deco 01)
- 1 x Glove (Only Deco 01)
- 1 x USB-C to USB-A Cable
- 1 x Protective Film (Only Deco 01)
- 8 x Nibs
- 1 x USB to USB-C Adapter

* The list is for illustrative purposes only. Please refer to the actual product.

2. Connection

2.1 Connect to computer

Please connect the USB-C to USB-A cable by plugging the USB-A end into the computer's USB port and the USB-C end into the tablet's USB-C port.



2.2 Connect to Android Phone or Tablet

Please connect the USB-C cable with OTG adapter to the android device and the drawing tablet respectively.

The product is set to full area mapping by default. You can download the XPPen tools app to adapt to your screen ratio, ensuring precise mapping :

- Go to the official website (<https://www.xp-pen.com>) to download the XPPen tools app and install it on your android device;
- Open the app and adjust the active area according to the instructions in the app.

3. Compatibility

Windows 7 (or later)

macOS 10.12 (or later)

Android 10.0 (or later)

Chrome OS 88 (or later)

Harmony OS

Linux.

4. Product Settings

4.1 Driver Installation

To ensure the device works properly, please install the driver before using.

Please download the driver suitable for your product model from XPPen website (<https://www.xp-pen.com>).

Notes:

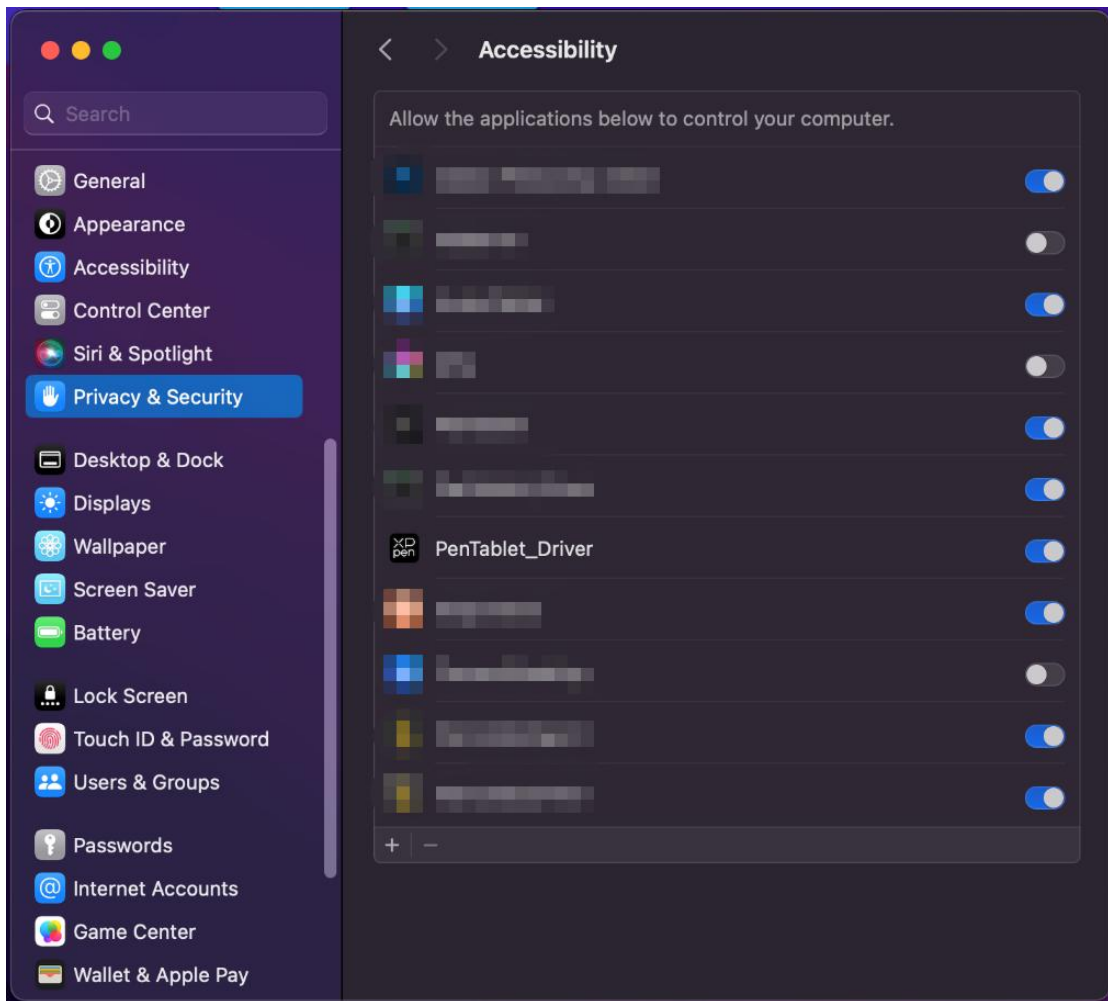
1. Before installing the driver, please turn off all antivirus software and graphics software.
2. Uninstall drivers (if any) for other drawing displays/tablets before the installation.
3. Restart your computer after the installation is completed.
4. For the best performance for your device, we recommend you to install the latest driver.

Windows:

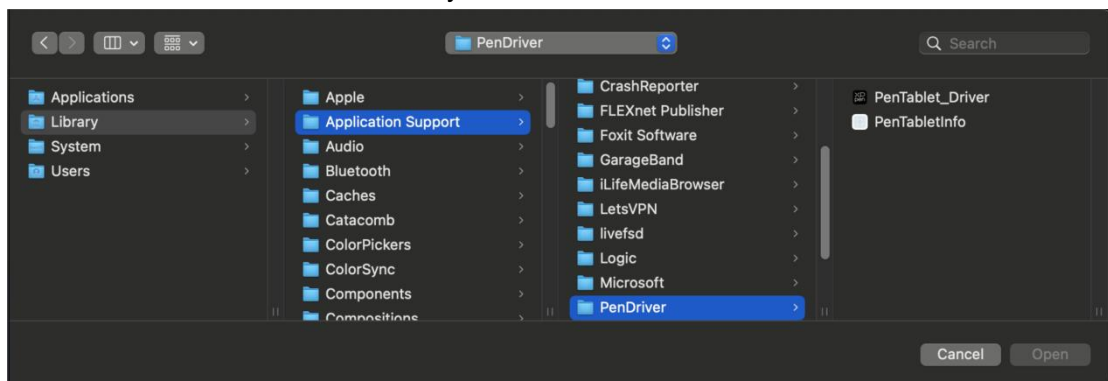
Unzip file. Run the "exe" file as administrator, and follow the prompts to complete the installation.

Mac:

Unzip file, run the "dmg" file and follow the prompts to complete the installation. Go to System Settings -> Privacy & Security -> Accessibilities; Wireless: System Settings -> Privacy & Security -> Accessibilities & Bluetooth, please ensure that the PenTabletDriver option is checked; Otherwise, the device and driver may not function properly.



If there is no PenTablet_Driver on the list, go to resource Library -> Application Support -> PenDriver to add the driver manually.



Linux:

Deb: Enter command "sudo dpkg -i". Drag the installation file to the window and execute the command;

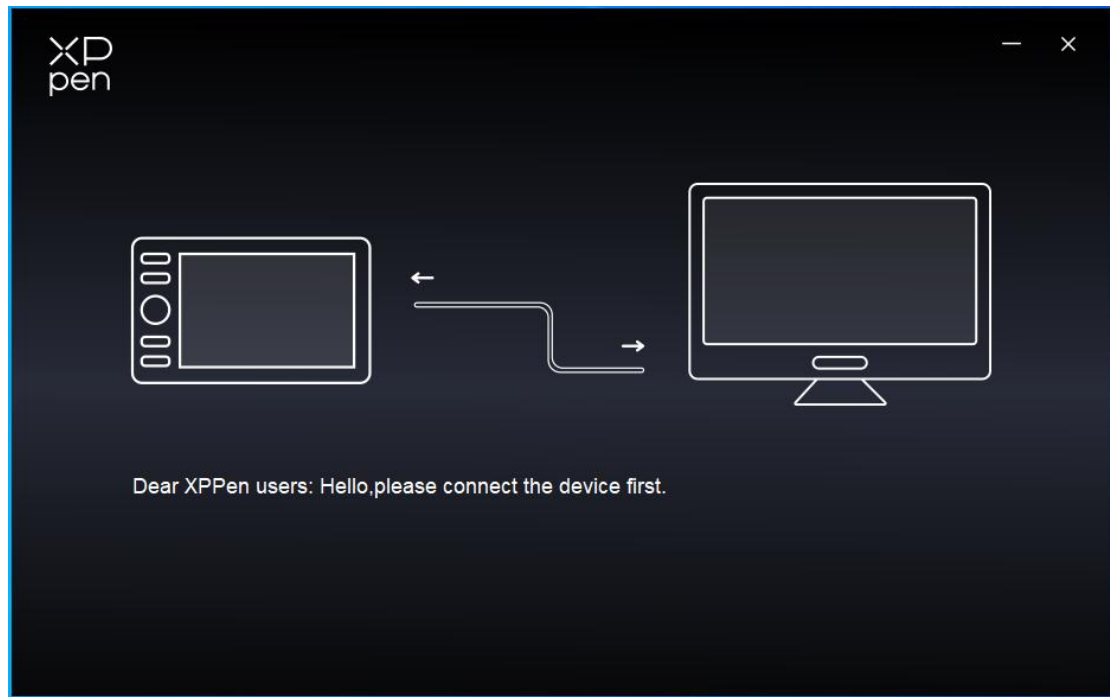
Rpm: Enter command "sudo rpm -i". Drag the installation file to the window and execute the command;

Tag.gz: Unzip file. Enter command "sudo". Drag "install.sh" to the window and execute command.

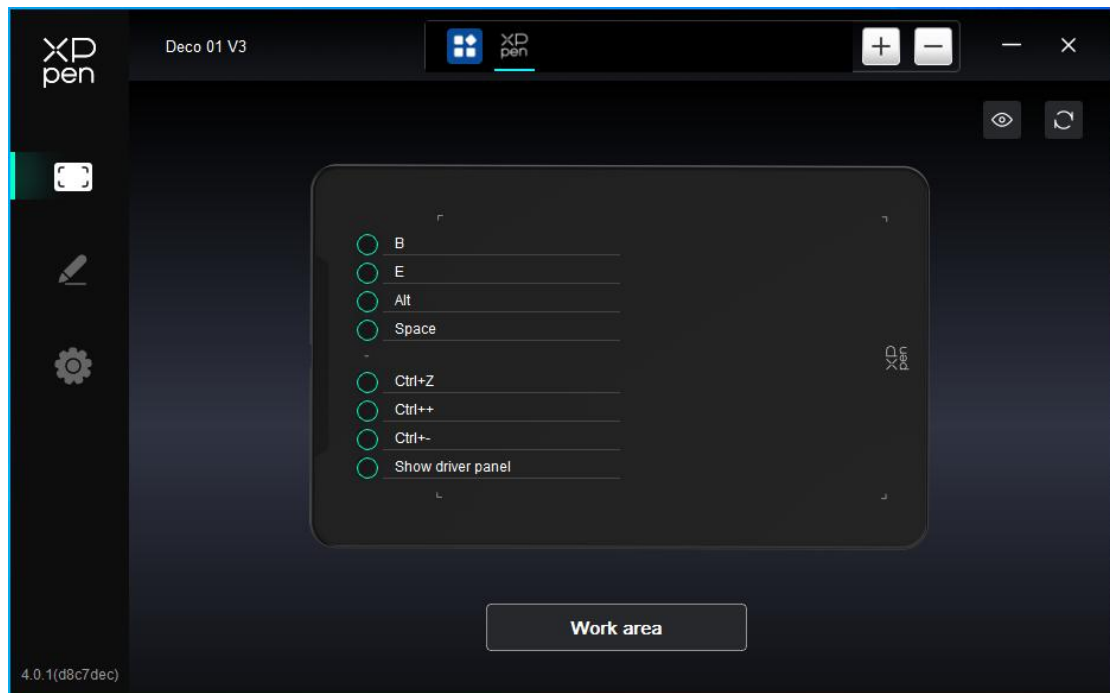
4.2 Introduction to Driver

The driver will run automatically after being installed. If it does not run automatically, please run it manually.

If the device is not connected or the connection fails, you can see the following prompt. In this case, try to restart your computer or the driver, or contact our service staff for support.



If the device is connected to your computer successfully, the device name will be displayed in the upper left corner of the driver.



You can connect up to multiple devices via the driver at the same time. Customize a

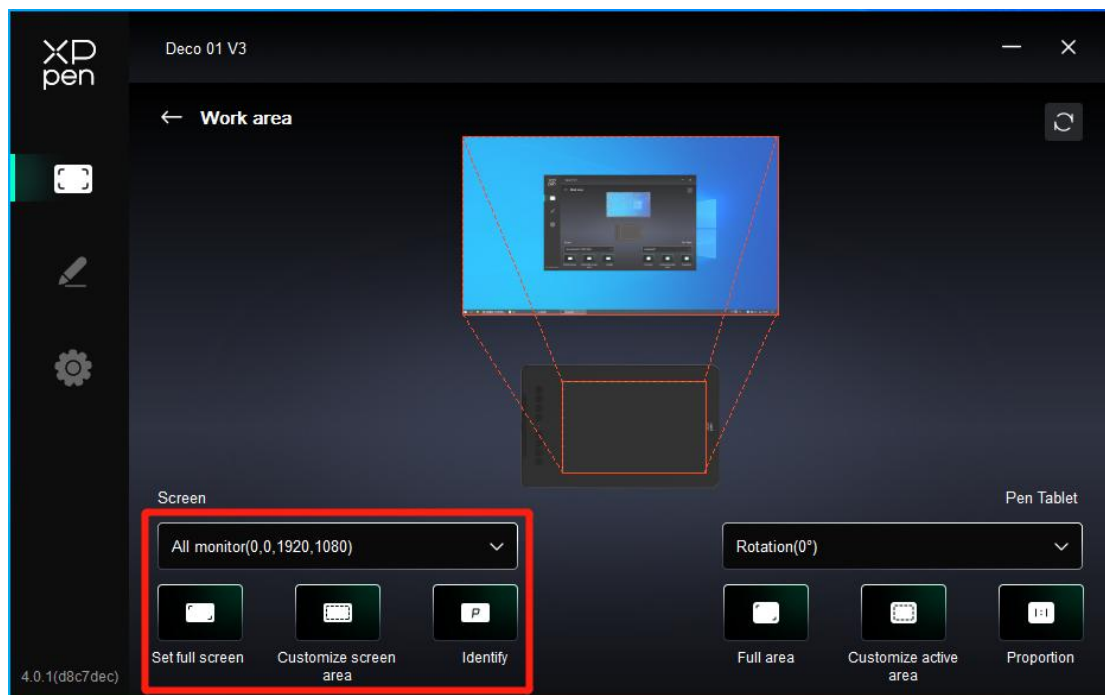
specific device's settings after switching to that device, and all changes made will only apply to that device.

4.3 Device Settings

4.3.1 Work Area

Go to Work Area and define the mapping between the device's work area and the screen display area.

Screen

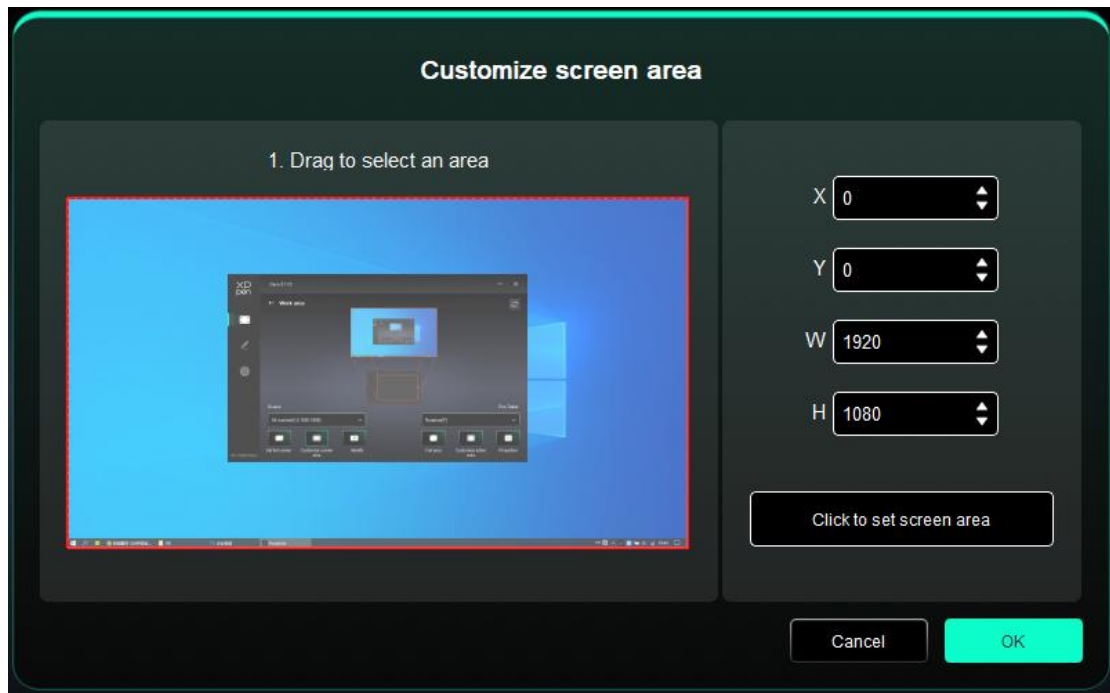


You can set the mapping between the display area of the current monitor and the device. If multiple monitors are used in duplicate mode, the work area of the device will be mapped to all monitors. When the pen moves in the work area, the cursor on all monitors will move at the same time.

If multiple monitors are used in extend mode, go to monitor tabs to select one of the monitors that the work area of the device will be mapped to.

There are two available options to set the monitor mapping area:

1. Set full screen: The whole area of the selected monitor;
2. Customize screen area: There are three ways to customize the work area.

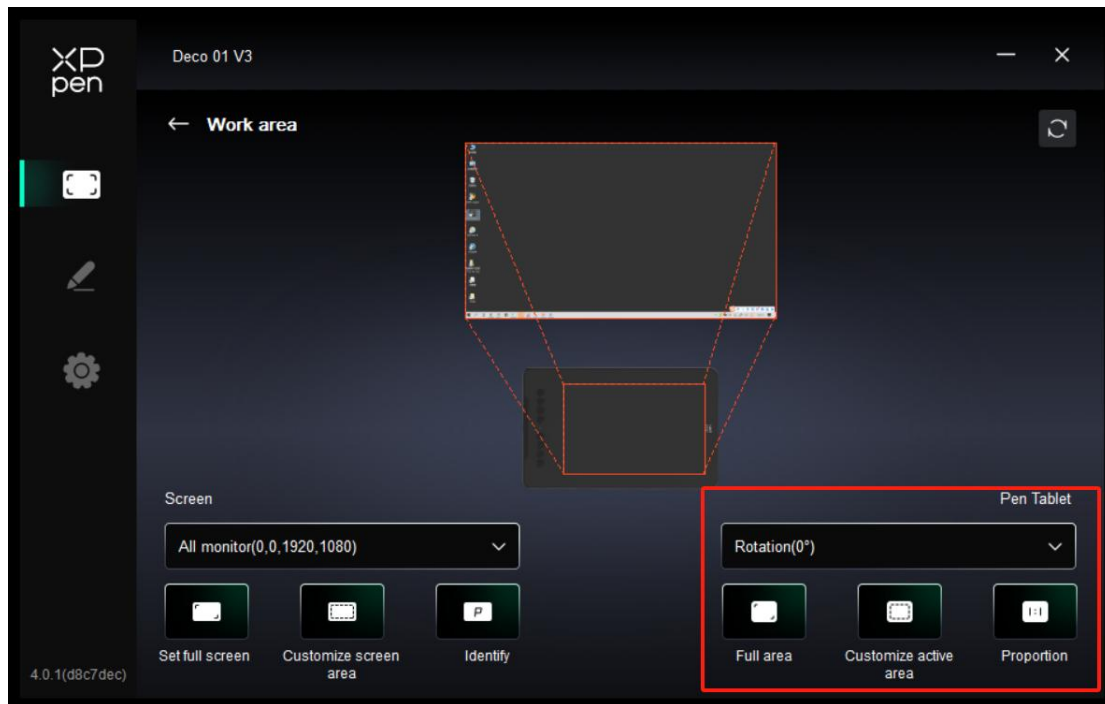


- Drag to select an area: Drag the cursor from one point to another on the Screen.
- Click to set screen area: Click the upper left corner position and lower right corner position to select on the monitor.
- Coordinates: Manually enter coordinates in the corresponding input boxes for X, Y, W and H.

Identify:

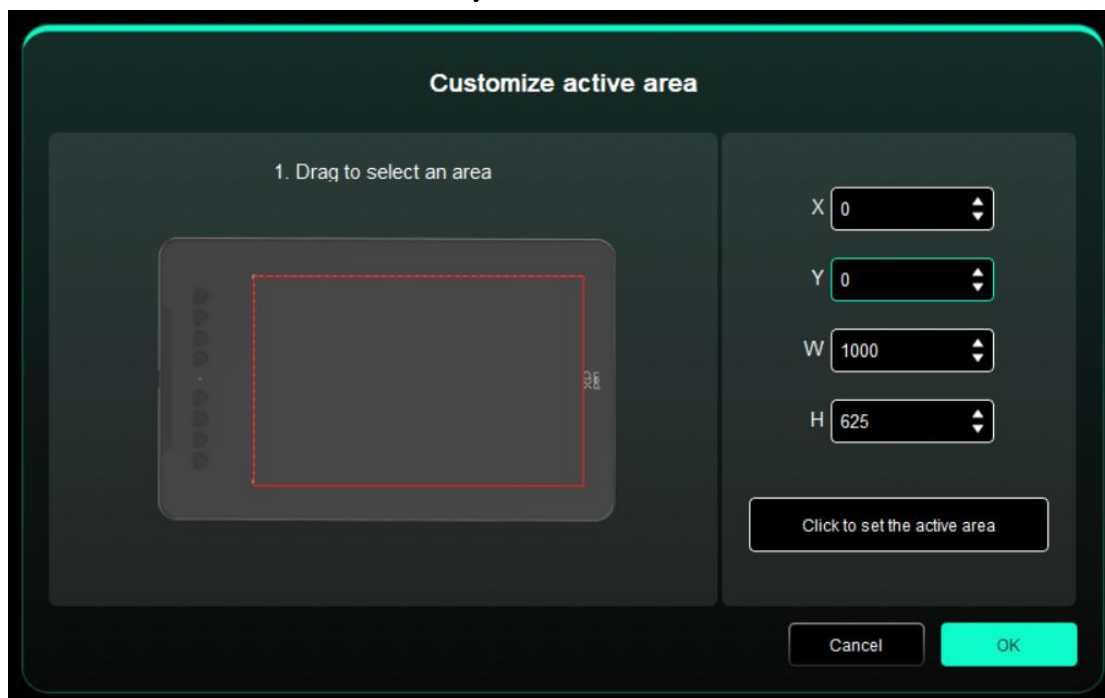
Identify all connected monitors. The numeric identifier will be displayed in the lower left corner of each monitor.

Drawing Tablet



The driver enables the following ways to set the work area of the device:

1. Full area: The whole work area of the device is available.
2. Customize active area: Three ways.



- Drag to select an area: Drag the cursor from one point to another on the device.
 - Click to set active area: Use stylus to click the upper left corner position and lower right corner position on your device.
 - Coordinates: Manually enter coordinates in the corresponding input boxes for X, Y, W and H.
3. Proportion: Scale your device's work area and selected display area proportionately. For example: After selecting proportion, if your draw a circle on the device, a circle will

appear on the screen, but some part of the work area may not be used. But if you don't choose the proportion and draw a circle, then the circle may change into an ellipse on the screen.

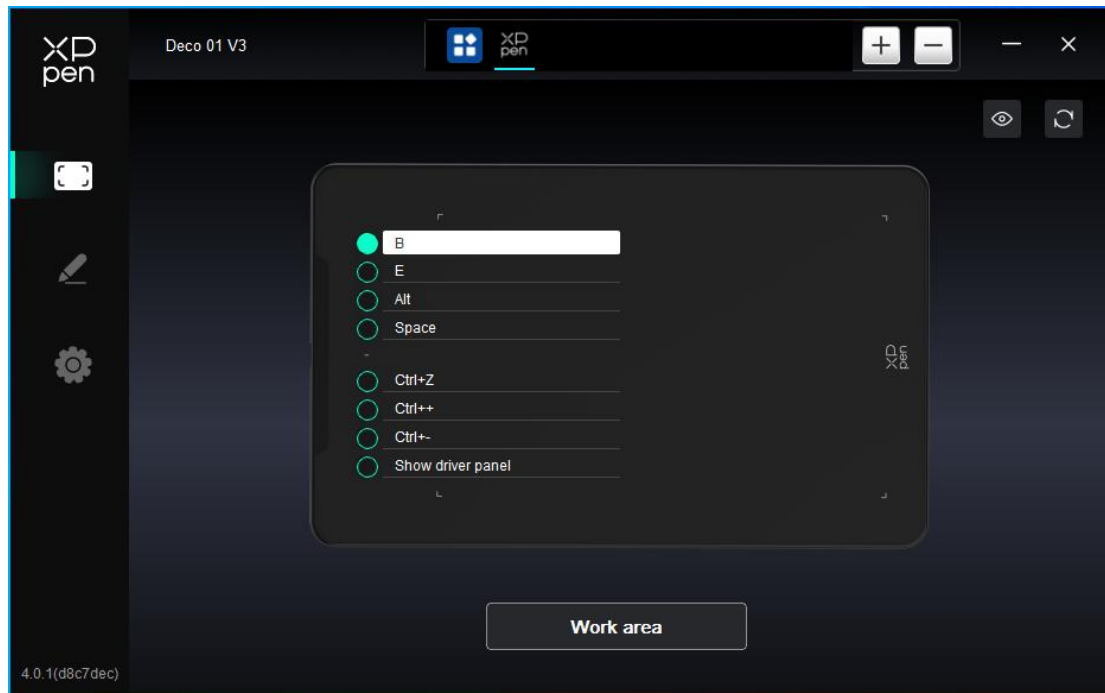
Rotation:

You can set the device to 0°, 90°, 180° and 270° clockwise for use.

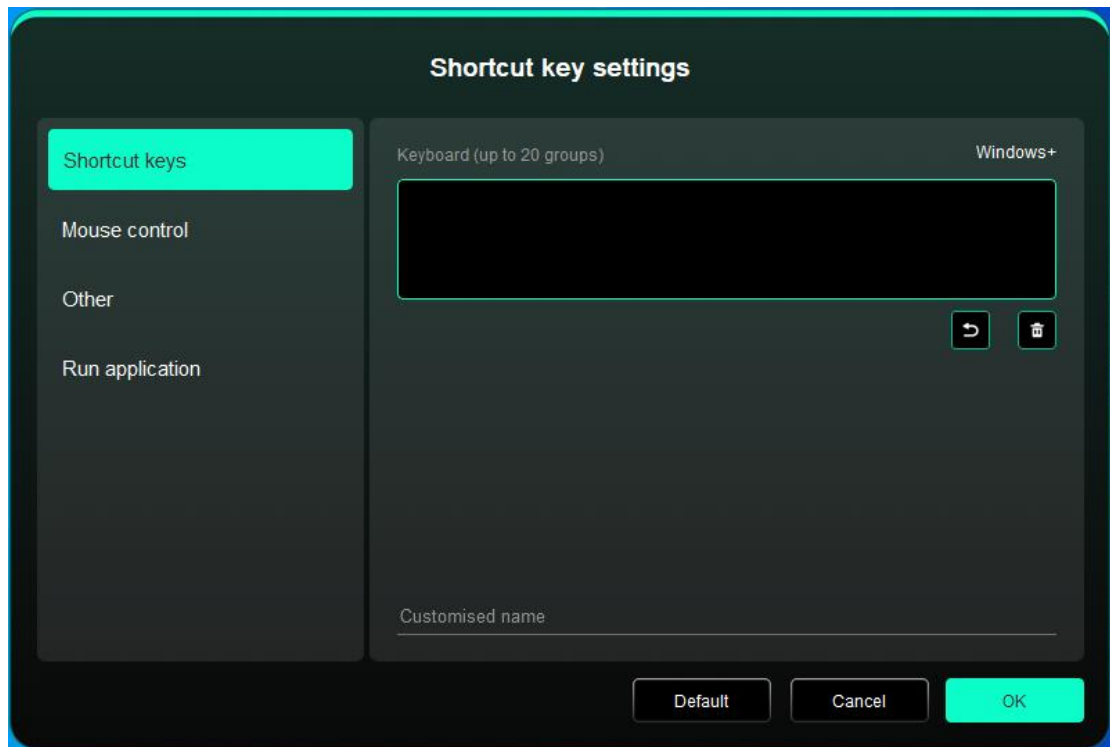
Left-handed mode: Rotate 180°.

4.3.2 Shortcut Key

Click on the shortcut keys position on the image to customize its function.



Keyboard:

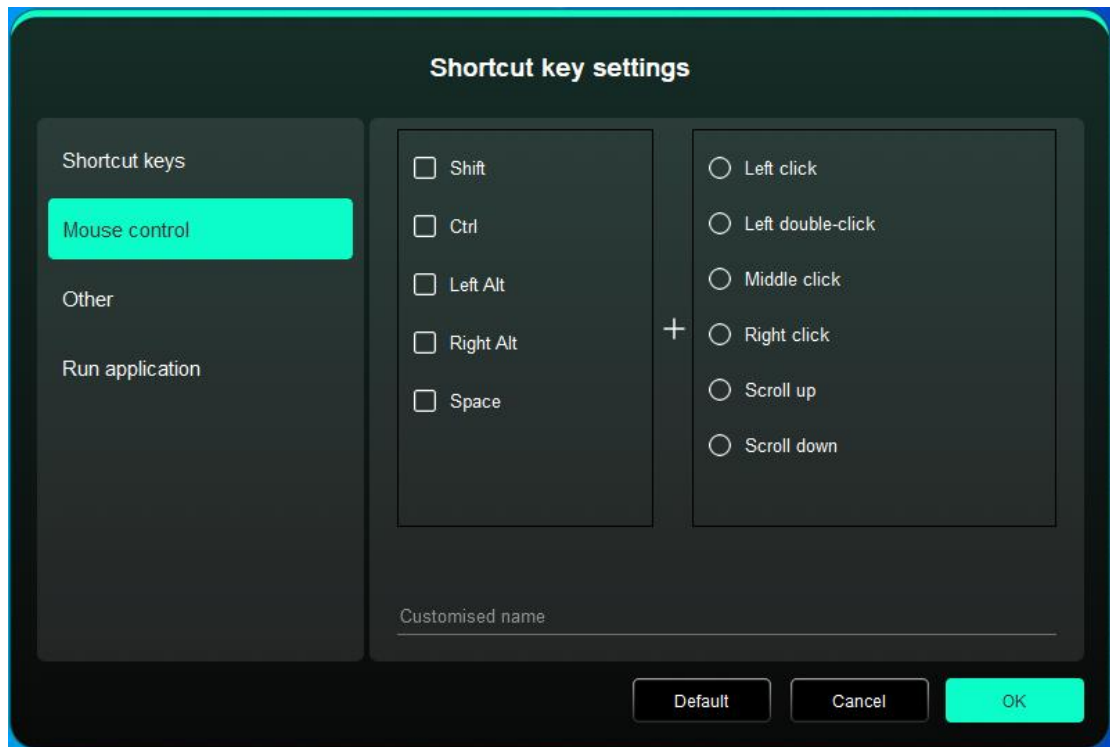


You can set keyboard shortcut, for example, set it as “Alt+A” in 3D MAX, so the alignment tool can be used.

Multiple groups of shortcut keys can be set. For example, type Ctrl+C, Ctrl+V, and when you press the key, the shortcut key functions set will all run once.

Windows (Command): You can add a combination key containing system key, for example: to enter Win(Cmd)+Shift+3, you can press Shift+3 and the driver will bring the system key automatically.

Mouse Control:



Set the key combination of mouse and keyboard. With the "Shift" and "Left Click" selected, the shortcut actions can be enabled in application that supports such key combinations.

Other-Precision mode:

Limit the device's work area to a certain area. This function may allow you to create more detailed drawings.

Run Application:

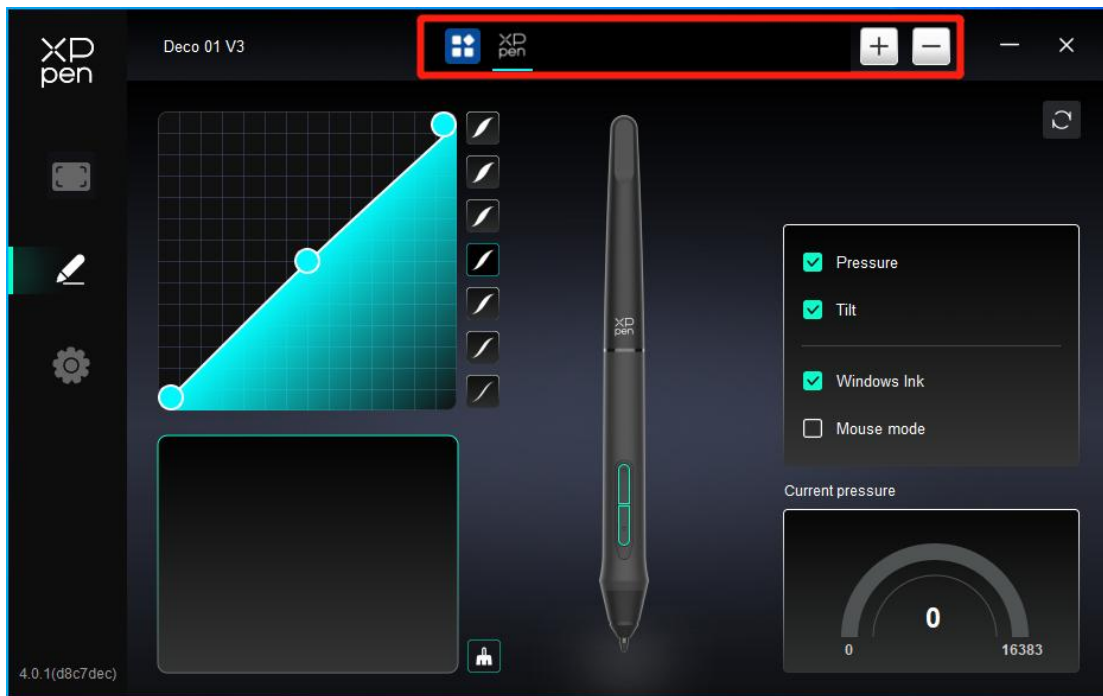
Run the selected application.

Customized name:

You can customize the name of the current settings.

4.4 Application

The driver allows you to set different functions for different applications.

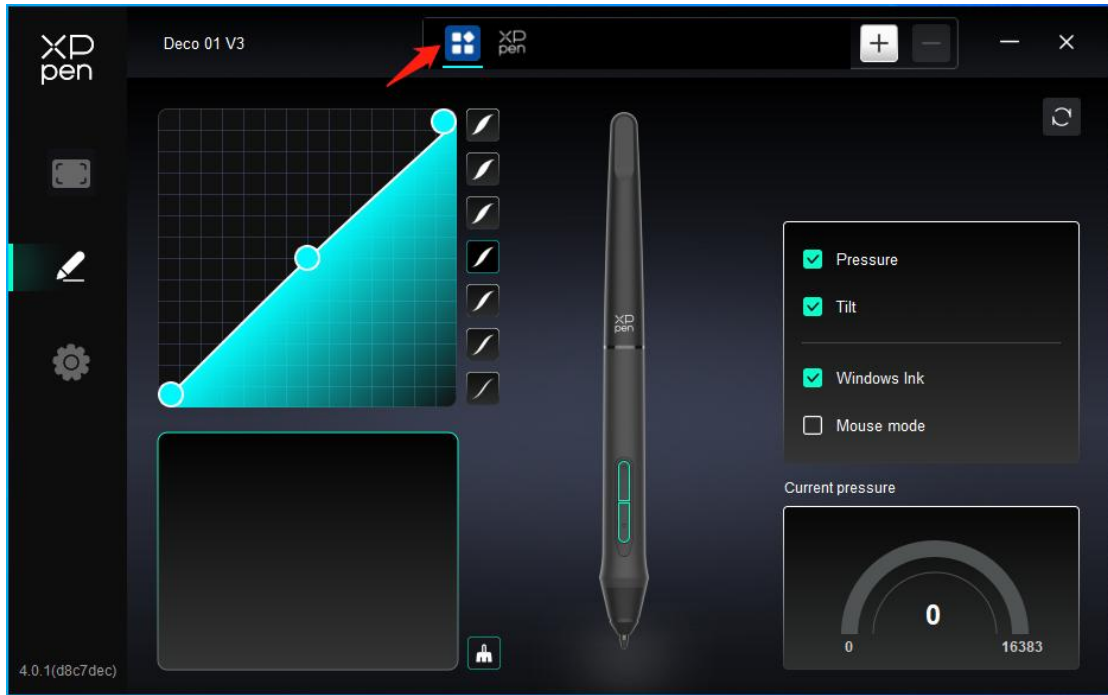


Add an application from the list of applications, tick the application, and then customize pen keys functions.

For example, if you select an application and change its configuration, the change is valid only when you use the application. When you switch to another application, the driver will recognize it automatically. You can add up to 7 applications.

1. Click the + icon on the top right of the application bar to open the application list;
2. Select an application to be added from the running applications or click Browse to add from the installed applications;
3. Click "OK" to add the selected application;
4. Select an added application, and click the - icon on the top right of the application bar to delete the application.

If you select all other applications, it will apply to other uncustomized applications.

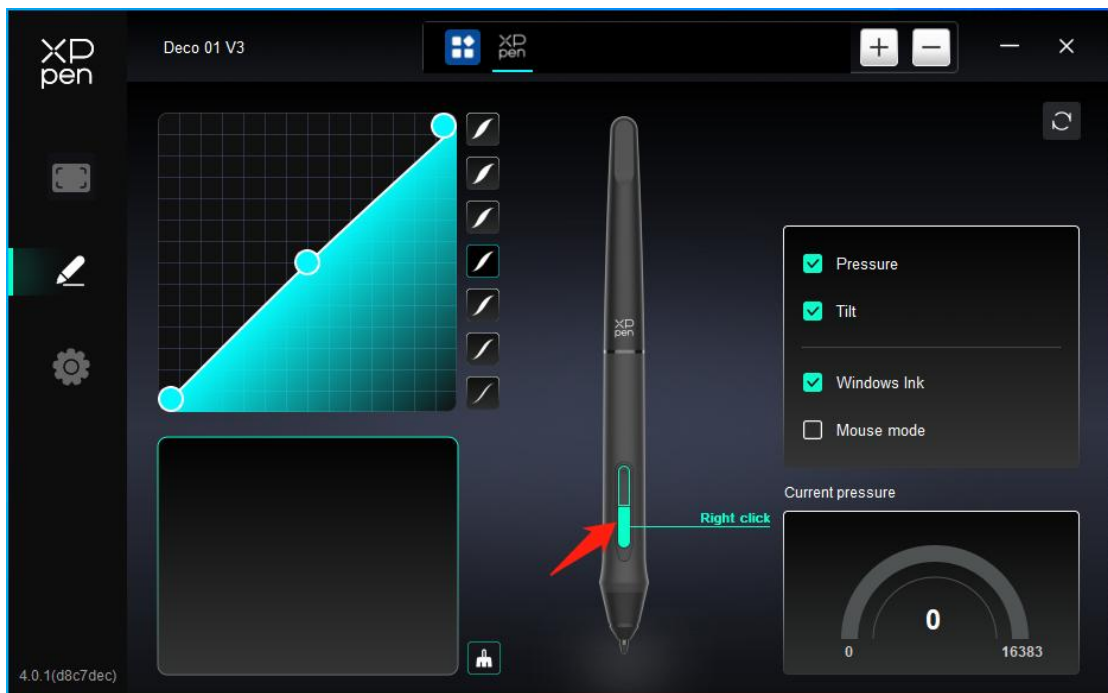


4.5 Pen Settings

When the stylus is within the work area, the device will recognize the stylus and add it to the driver. The stylus used should be compatible with the device.

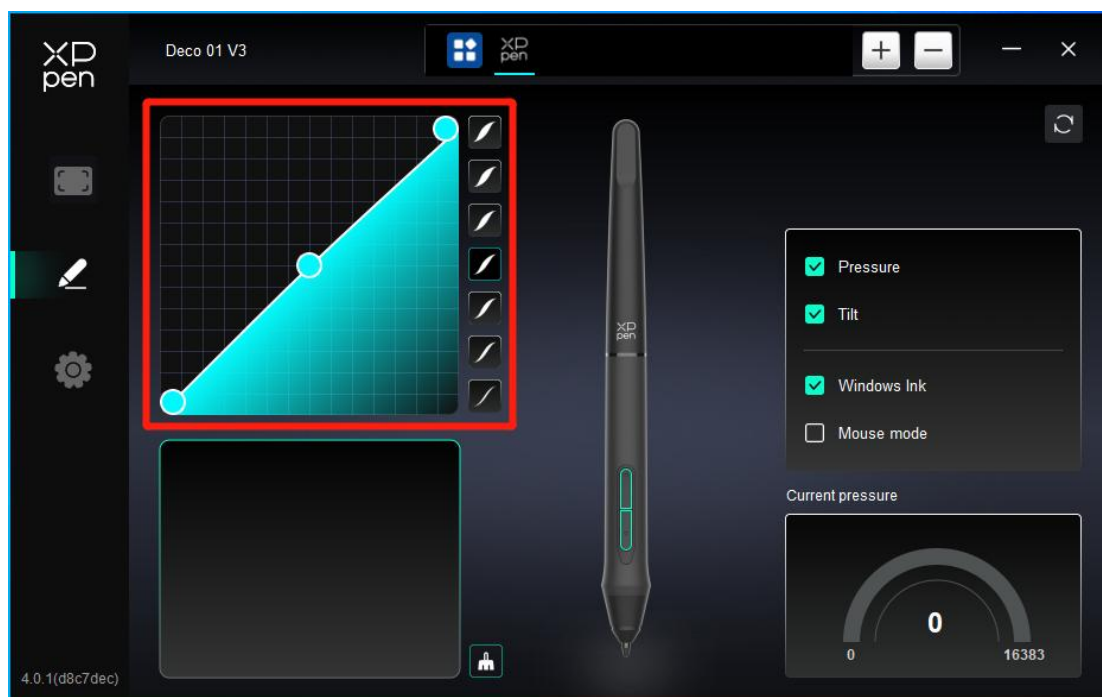
Pen keys

The setting or usage method is the same as the shortcut keys, see 4.3.2.



Pressure

By adjusting the pressure curve or selecting preset pressure options.



Current pressure:

Test the current pressure sensitivity level of your stylus.

Pressure:

When turned off, the pressure sensitivity of the stylus will be disabled.

Tilt:

When turned off, the tilt functionality of the stylus will be disabled.

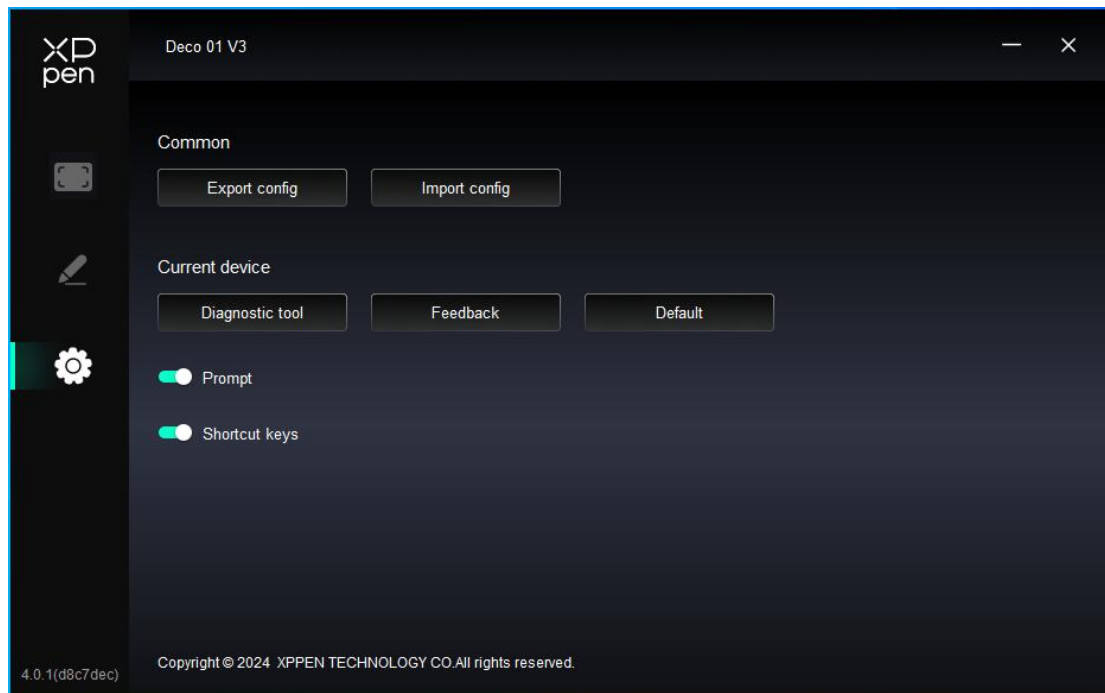
Mouse mode:

When you move your pen out of the work area, the cursor will stay where you leave, which is like operating a mouse. Select the mode and you can adjust the speed of the cursor on your device. If you do not select the mode, the pen mode applies by default.

Windows Ink (for Windows only):

Windows supports handwriting function. If you need to use this function in Microsoft Office/Whiteboard or other software, please do not turn it off.

4.6 Driver Settings



Import & Export config:

You can import/export configurations to read or save their settings.

This function is available for only the same operating system.

Diagnostic tool:

You can use the diagnostic tool in case of any problems while using the driver.

Feedback:

If you have any questions or suggestions during the use of the driver, you can give us feedback through this page.

Default:

Restore all driver default settings, your current customized settings will be reset to default.

Prompt:

When turned off, key prompts will not be displayed at the bottom of the screen when the buttons are pressed.

Shortcut keys:

When turned off, all button functions on the device will be disabled.

4.7 Driver Uninstallation

Windows:

Go to Start -> Settings -> Apps -> Apps & Features, find "Pentablet" and then left click "Unload" as per prompts.

Mac:

Go to [Go]-> [Applications], find XPPen and then click "UninstallPenTablet" as per prompts.

Linux:

Deb: Enter command “sudo dpkg -r XPPenLinux” and execute the command;
Rpm: Enter command “sudo rpm -e XPPenLinux” and execute the command;
Tag.gz: Unzip file. Enter command “sudo”. Drag uninstall.sh to the window and execute command.

5.FAQs

1. Computer fails to recognize the device.
Check if your computer's USB port used works normally. If not, use another USB port.
2. Stylus does not work.
 - a) Make sure you are using the stylus that originally came with your device;
 - b) Make sure you installed the driver correctly, and check if the pen settings of the driver is normal.
3. The drawing software cannot sense the pen pressure while the cursor can move.
 - c) Check if the drawing software supports pen pressure;
 - d) Download the latest driver installation files from XPPen website, and check if the pen pressure is normal in the driver;
 - e) Before installing the driver, turn off your antivirus software and graphics software;
 - f) Uninstall drivers for other drawing displays before installation;
 - g) Restart your computer after the installation is completed;
 - h) If the pen pressure is normal in the driver (Windows: ensure Windows Ink is enabled in the pen settings of the driver), run the drawing software and test it again.
4. Line latency during drawing with the software.
Check if the computer configuration (CPU&GPU) meets the recommended configuration requirements for the drawing software installed, and optimize related functions via settings according to the FAQs posted on the official website of the drawing software.

This Class B digital apparatus complies with Canadian ICES-003.

Cet appareil numérique de la classe B est conforme à la norme NMB-003 du Canada.

If you need any further assistance, please contact us at:

Website : www.xp-pen.com

Email: service@xp-pen.com